



INNOVATION IN MECHANICS



THE COMPANY



Officine Meccaniche BBM S.p.A., established in 1965, is a manufacturing company specialized in fabricated, welded and machined components, as well as complete assembled machines. Our main customers belong to the steel, energy, aerospace and marine industries. With a production area of 6.600 m², we employ more than 120 highly qualified staff members in both offices and workshop facilities.

Our capabilities are:

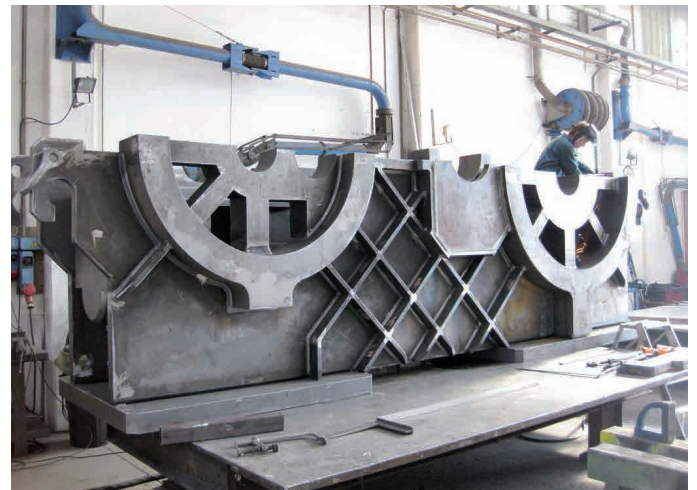
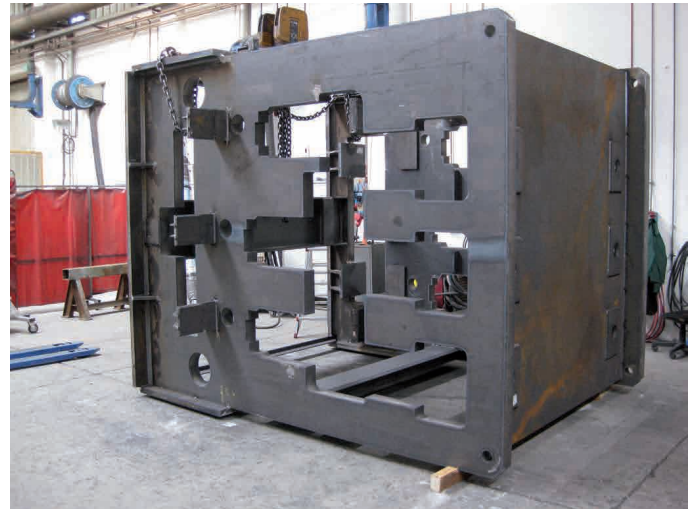
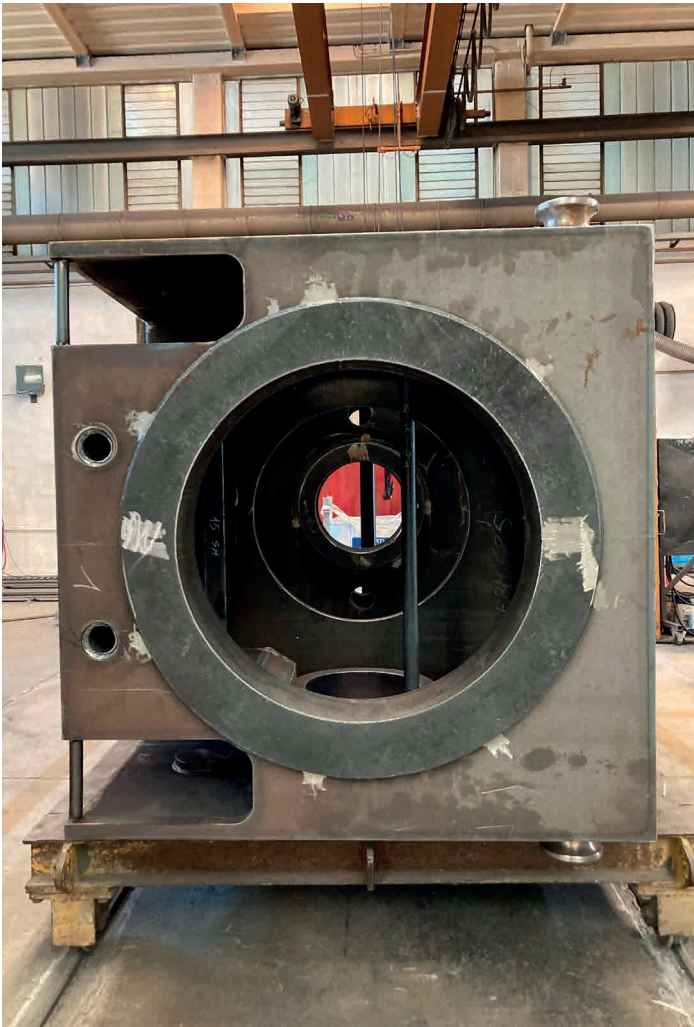
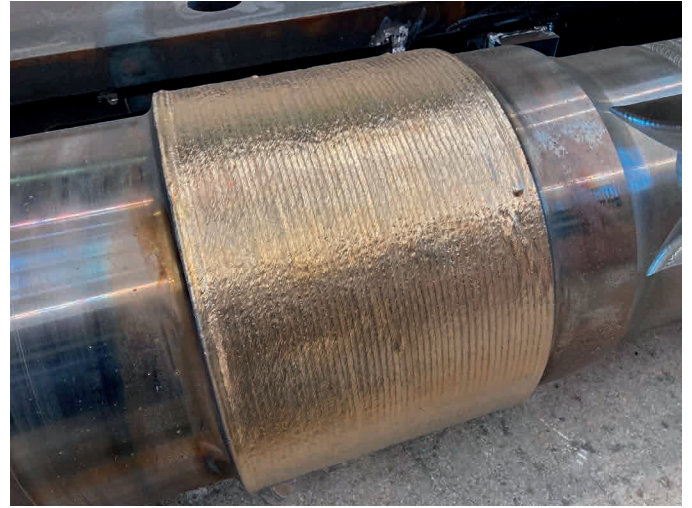
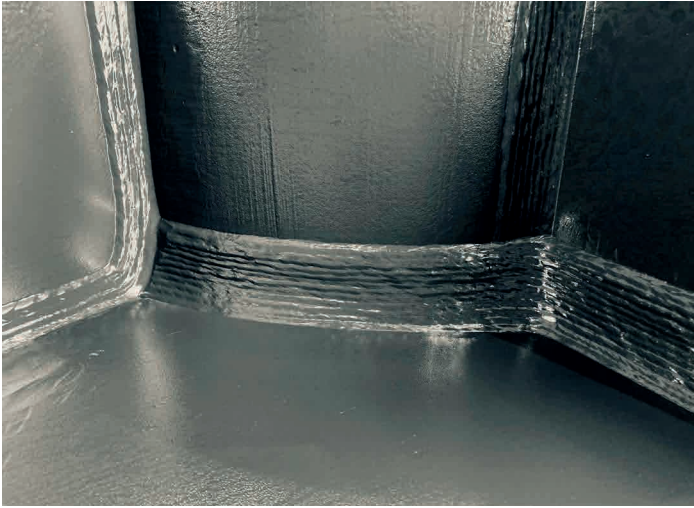
WELDING

MACHINING

ASSEMBLY

BBM is certified according to ISO 9001, ISO 14001, ISO 45001, ISO 27001 and ISO 50001.





WELDING

Our Workshop is able to weld various components and equipment that satisfy design requirements with dimensions that can reach nearly 20 meters in length and 5 meters in width, with a maximum weight of 60 tons.

In addition to employing all certified welders, an internal IWE is able to evaluate welding designs and determine the appropriate procedure to follow throughout production to meet customer requirements.

Our welder are qualified according to ISO 3834-2 and EN 1090-2.

Welding procedures have been issued by the Italian Institute for Welding (IIS) in meeting industry requirements.

LIST OF MACHINERIES AND EQUIPMENTS



Boring-mill machine CNC
Spindle dia. 150 with turnable table
max load 50 tons

20.000x5.000x1.250x700



Boring-mill machine CNC
Spindle dia. 130 with turnable table
max load 30 tons

15.000x3.500x1.250x700



Boring-mill machine CNC

10.000x2.500x1.200



SORALUCE
Double turnable table
max load 60 tons

10.000x4.500x1.900+1.000



Gantry milling machine CNC

8.000x2.400x1.200



Lathe mill-turn machine
(WFL M120)

6.500x1.120



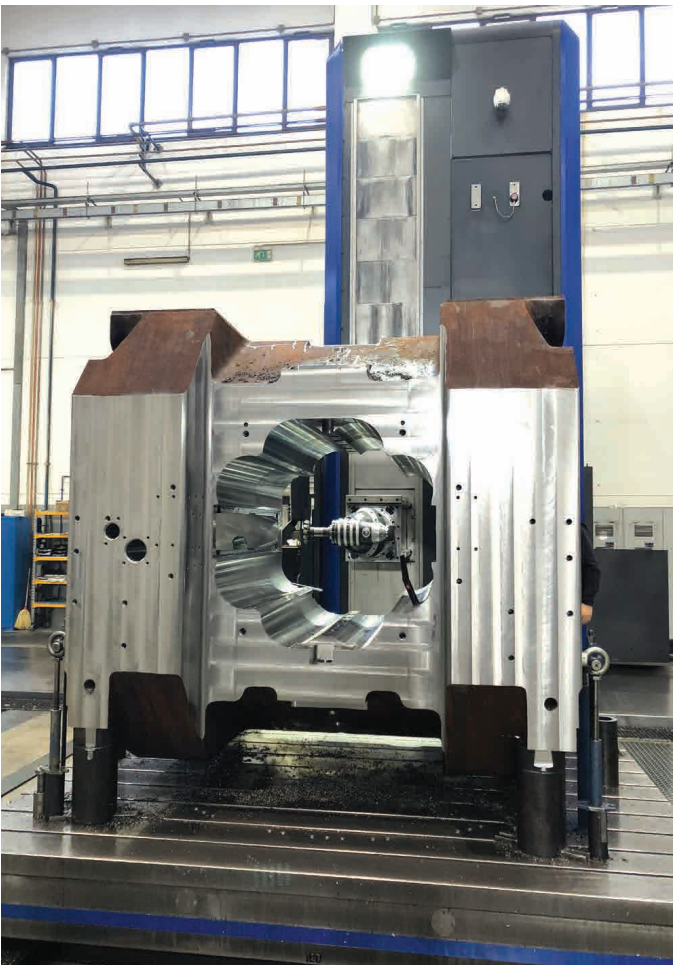
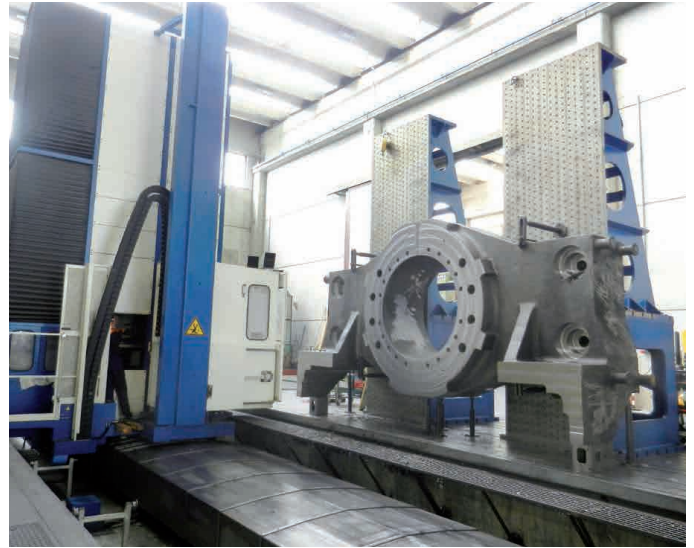
Lathe mill-turn machine
(WFL M150)

8.500x1.440



CMM Machine DEA GLOBAL 20.50.15

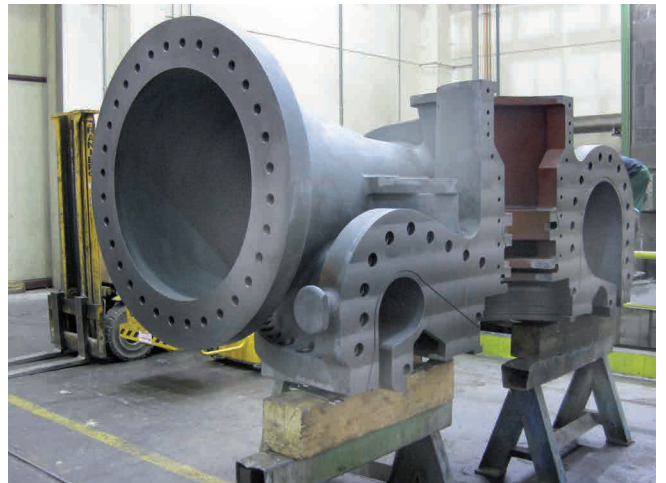
2.000x5.000x1.500



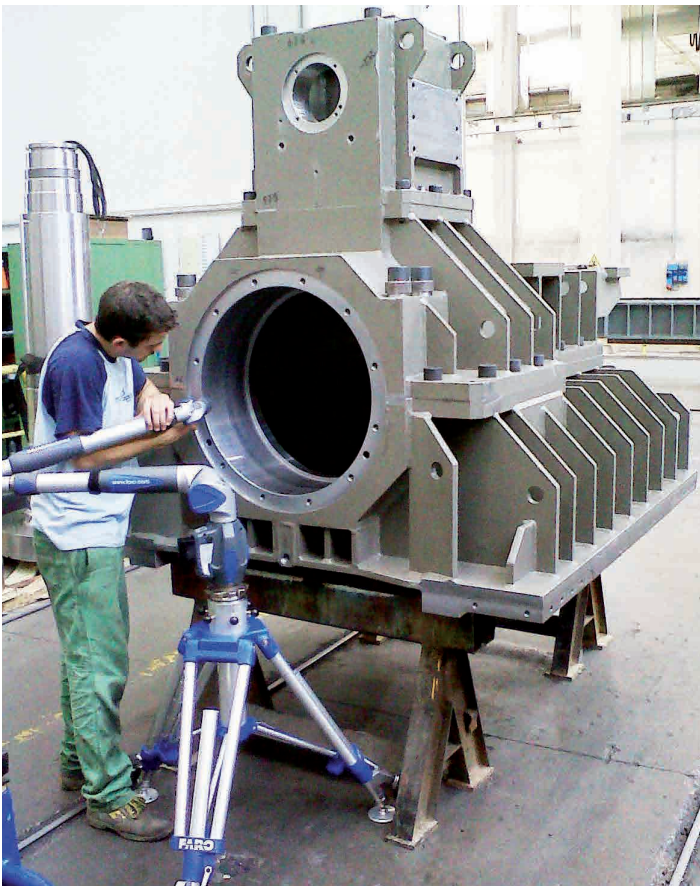
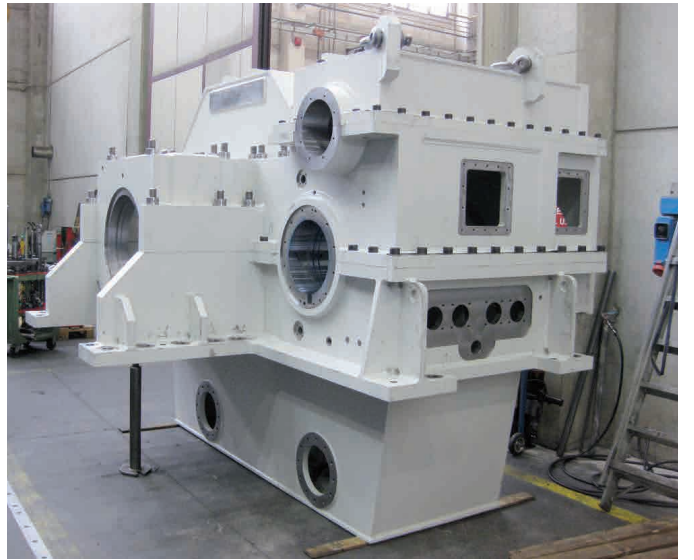
MACHINING

Our workshop offers a wide range of high precision Boring Milling machines for medium to large size pieces in accordance to customer drawings. Overhead cranes are used for pieces weighting up to 60 tons, and for pieces weighting up to 90 tons mobile cranes are used.

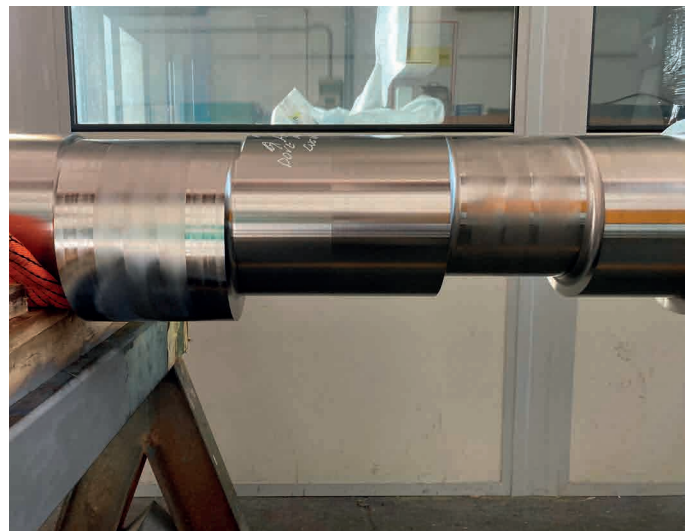
Our machine capacity is 20.000 mm in lenght, 5.000 mm in height, and equipped with turntables up to 50 tons with dimensions of 3.500 x 3.000. Our turn-mill machine can work components up to 8.500 mm in lenght and 1.440 mm in diameter.



CASTING MACHINING



GEAR BOX MACHINING



MILLTURN WFL

Wfl Department is equipped with 2 WFL Mill-Turning machines, capable to handle component up to 1440mm in diameter and 8500mm in length, 20 Tons.

This machines are capable of turning and milling operation in the same setting, with integrated indexable milling head.

Both the machines incorporate the latest technology solution to ensure flexibility.

The periodic geometric calibration ensure the repeatability and overall precision of the operations.

The preventive maintenance, regularly performed, ensure reliability in terms of delivery and lead time.



Turning and milling on same setting with highest precision requirements.

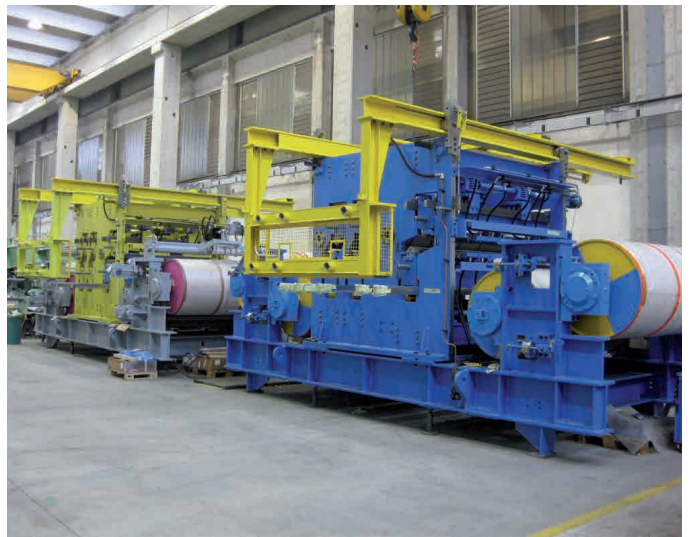
MARPOSS probe for inline inspection

ACCUSCAN facilities to check electrical and mechanical run-out 0,001mm precision



QUALITY DEPARTMENT

Our Quality Department is fully equipped to measure, analyze and report on all products in order to ensure customer requirements are satisfied.



ASSEMBLY

BBM's mechanical division is able to carry out special assemblies of groups or components up to 120 tons, inclusive of electrical wiring, pneumatic, hydraulic and grease piping according to customer's drawings and specifications. BBM delivers a complete package in terms of assembly, installment, lifting and packaging.



OFFICINE MECCANICHE BBM S.p.A.
VIA MOTTINELLO, 141
36028 ROSSANO VENETO (VI)
ITALY
TEL. +39 0424.544400
INFO@BBM.IT
WWW.BBM.IT



Via Mottinello, 141 / 36028 ROSSANO VENETO (VI) Italy
Tel. +39 0424 544400 / info@bbm.it

BBM.IT