

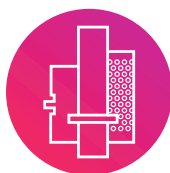


Guiding elements

MDL[®]



AMDL[®]
Atelier Mécanique De La Lauch



Guiding elements are essential for cutting or stamping presses and tools.

They ensure the tool remains in position, enhance durability, increase precision, and ensure the alignment of punches and dies.

Our three ranges of guiding elements, following ISO, DIN, and AFNOR/CNOMO standards, cover all applications and guidance needs. Explore our in-stock standard elements.





Guide pillars

Guide pillars play a crucial role in press tools by ensuring precise positioning and form the basis for guiding moving components.

They contribute to maintaining stability, precision, and durability of the entire tool. Various types of guide pillars are available to meet specific application requirements.



Guide bushes

In press tooling, guide bushes play a crucial role in ensuring precise and stable positioning of movable components.

Paired with a guide pillar and possibly a ball cage, they are used to guide the linear movements of elements within the tool, minimizing friction, vibrations, and excessive wear.

Various types of guide bushes are available, each with its own characteristics and advantages depending on the guiding system and the application.

To choose the right guide bush you need to take into account several parameters such as: loads, movement speed, precision, and other application-specific parameters. Each type of bush has its own advantages and limitations.





Ball cages

Ball cages enable press tools to operate at higher speeds and are crucial for specific applications.

Paired with a guide pillar and a guide bush, the ball cage allows low friction.

We have various types of ball cages available to suit different needs and applications.



Accessories

The accessories for guide elements allow us to complement our range of standard elements.

These include fastening elements and extensions for pillars or bushes.

Explore our range of additional elements!



More informations on our website





AMDL Cooperative

AMDL is a cooperative company (SCOP) that is born from the takeover of MDL Europe by 45 employees in October 2022 and is located in Issenheim, Alsace.

AMDL has **specialized for over 30 years** in **large dimensions** precise machining, as well as in the manufacturing and distribution of **standard press tooling components** under the MDL and Porter Besson brands.

Production site and logistics center

Our production site and logistics center are located in the Florival industrial zone, in Issenheim, Alsace (France). They are served by two major roads and located less than 20 minutes from the German and Swiss borders.

On this site, we carry out:

- **all your orders** for machining plates, die sets, and punches & dies,
- **worldwide shipments** from our logistics center where we stock our entire range of standard components and accessories from the MDL and Porter-Besson brands.

AMDL Key figures

10K

PRODUCTS

With over 10,000 references in stock, we can deliver all our standard lines within 48 hours.

30

YEARS OF EXPERIENCE

Drawing from the expertise of MDL Europe and Porter Besson, we specialize in press tooling, from guide elements to cutting tools.

30

MACHINES

Our fleet of over 30 machines allows us to offer a wide variety of operations while remaining flexible.

45

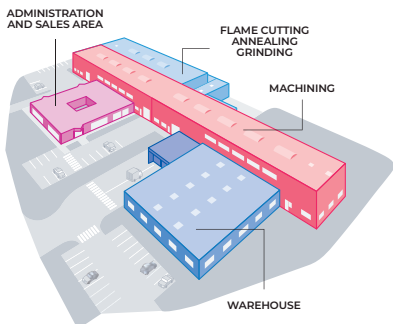
TEAM MEMBERS

With a constantly growing team of over 45 individuals, we work together to meet our clients' needs day after day.

3K

CUSTOMERS

We work every day to satisfy our 3000+ customers.



Our range of standard components

Our products are known worldwide for their quality and reliability. For more information, explore our articles by consulting the datasheets.



Guiding elements

Pillar
Bushes
Ball cages
Accessories



Punches and dies

Punches
Dies
Retainers
Accessories



Springs

Compression springs
Elastomer springs
Gas springs
Accessories



Die sets



Accessories

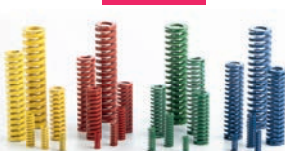
MDL



PB



MDL



MDL



AMDL SCOP SA
Aire d'activités du Florival
9 rue de l'Oberwald
F-68500 ISSENHEIM
+33 (0)3 89 74 24 24
info@amdl-eu.com



www.amdl-eu.com

AMDL
Atelier Mécanique De La Lauch

